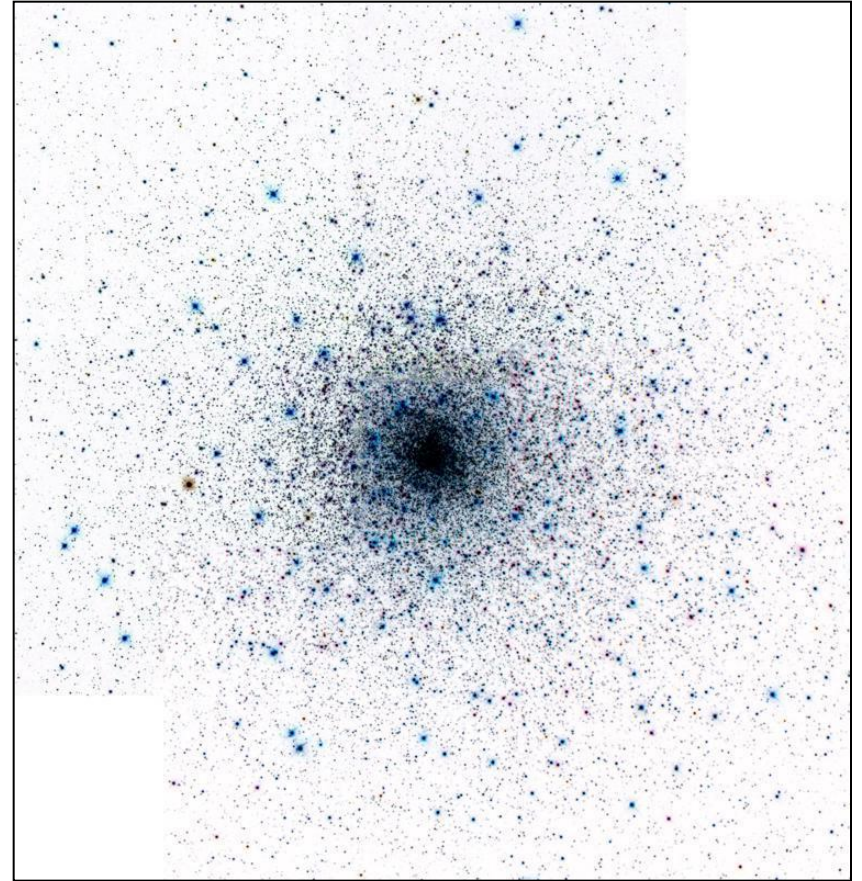
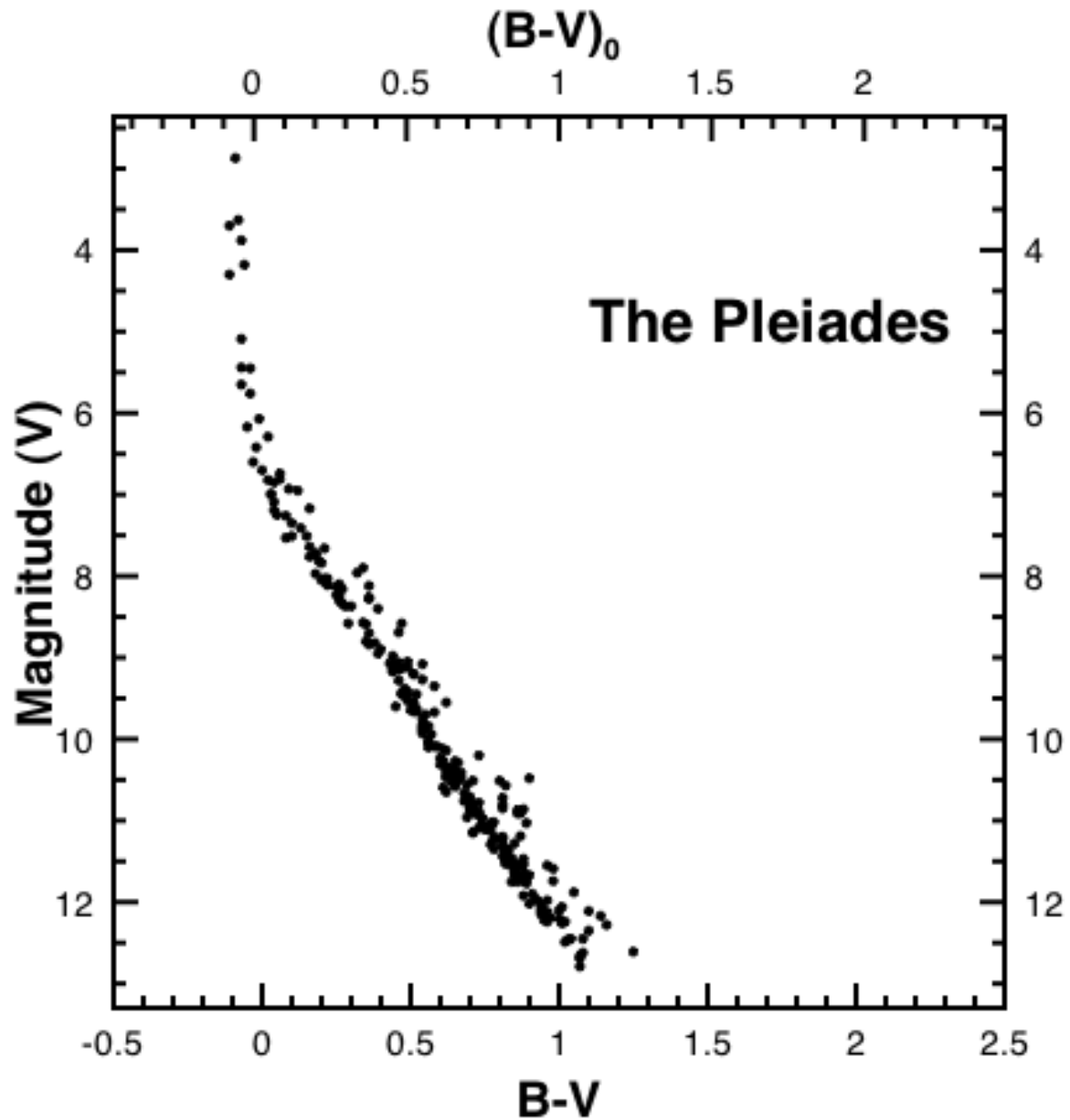


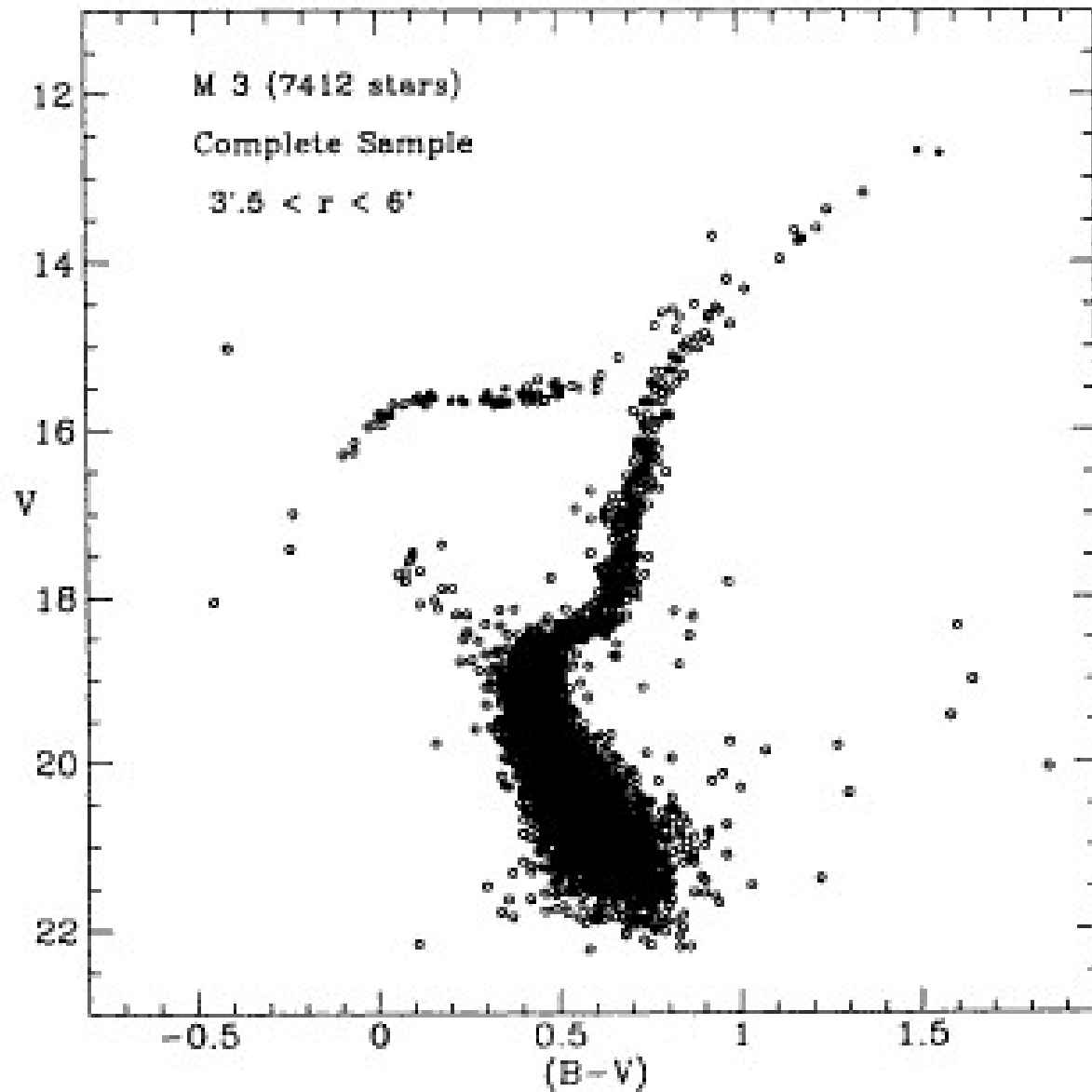
Open cluster NGC 457  
Credit: ROBERT GENDLER/SCIENCE  
PHOTO LIBRARY



Globular cluster M80. HST



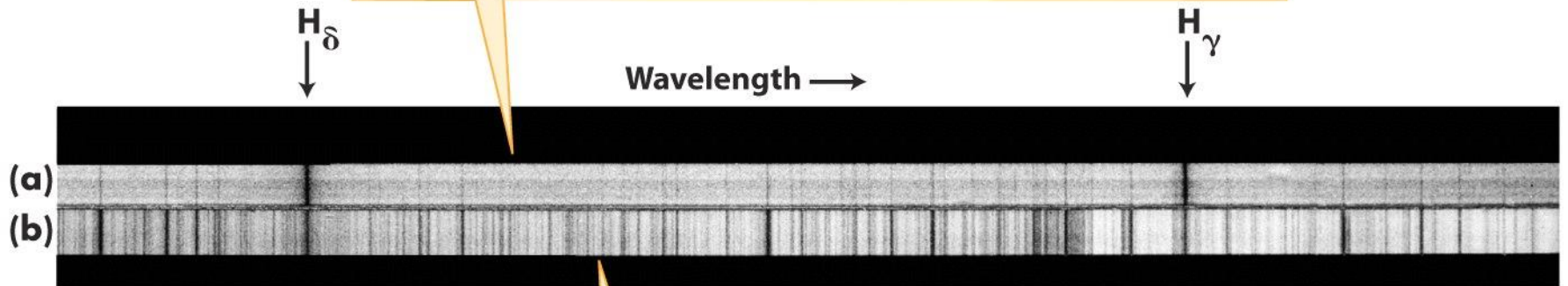
Colour-magnitude diagram of the Pleiades open cluster



Colour-magnitude diagram for the globular cluster M 3.

Buonanno, R.; Corsi, C. E.; Buzzoni, A.; Cacciari, C.; Ferraro, F. R.; Fusi Pecci, F. *Astron. Astrophys.* 290, 69-103 (1994)

The spectrum of this Population II star shows absorption lines of hydrogen (such as  $H_\gamma$  and  $H_\delta$ ) but only very weak absorption lines of metals ... such a star is metal-poor.



The spectrum of this Population I star has stronger absorption lines of metals ... such a star is metal-rich.